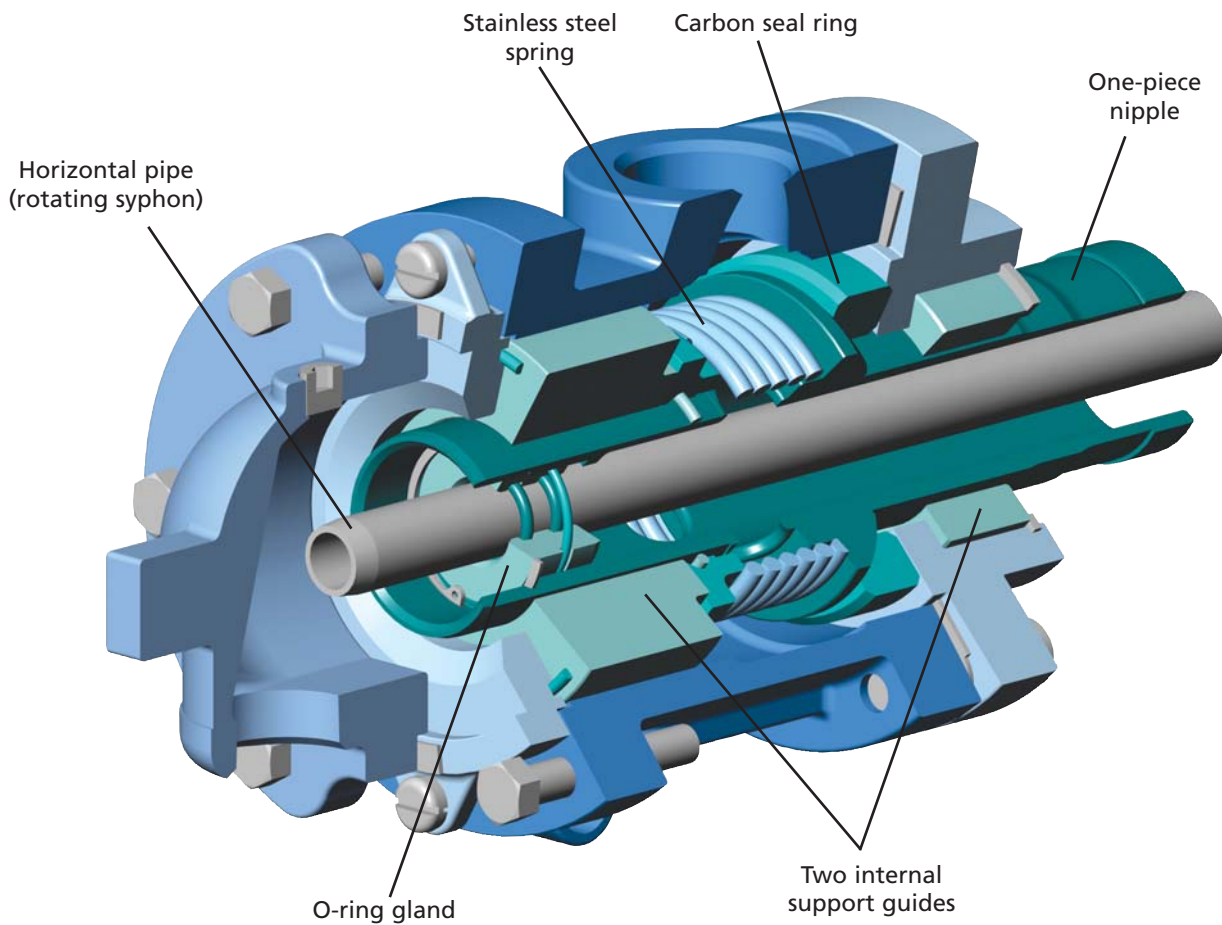


*enhanced design
for application
flexibility*

ELSN ROTARY JOINT



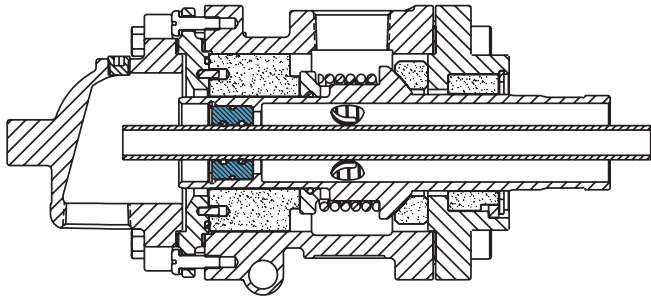
Features

- ▶ Designed for steam, water, and oil
- ▶ Two internal support guides
- ▶ Standard o-ring or preformed packing
- ▶ Longer o-ring gland
- ▶ Flexibility in mounting
- ▶ Single nipple design for all syphon sizes

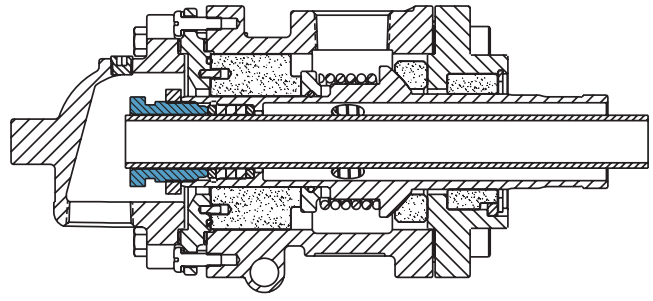
Benefits

- ▶ Application flexibility, simplified inventory
- ▶ Increased reliability and performance
- ▶ Reduced handling time, easy to maintain
- ▶ Upgrade to the ELSN without entering dryer
- ▶ No special installation tools required
- ▶ Reduced inventory of nipples

Rotary Joint Assembly

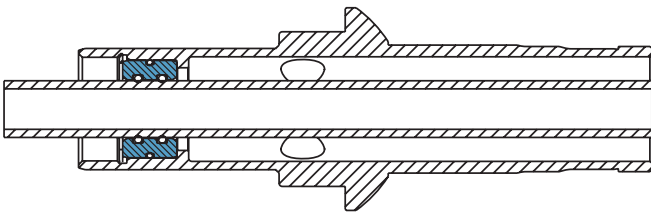


2550ELSNARQ-8 with o-ring gland

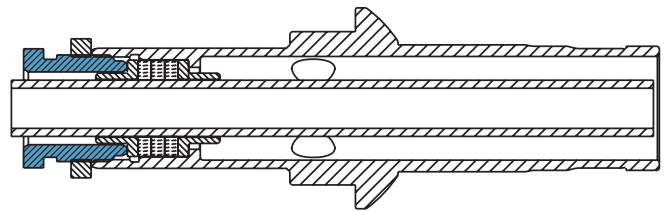


2550ELSNARQ-7 with packing gland

Nipple Sub-Assembly

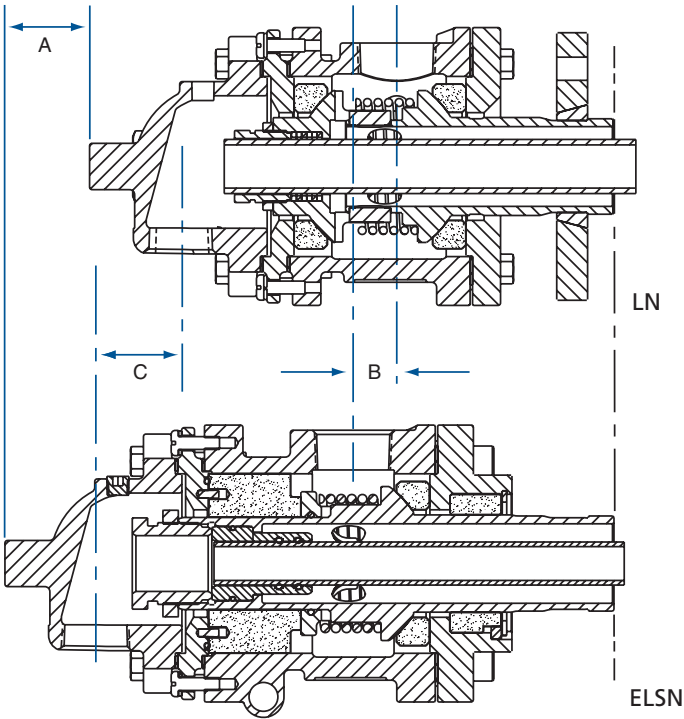


RK2550ELSNQ-075 with o-ring gland



RK2550ELSNQ-075-1 with packing gland

Upgrading to the ELSN Joint



Upgrading type LN rotary joints or other models to ELSN rotary joints can easily be done with the new nipple and o-ring seal option. The flexibility of the design means no dryer entry to relocate the syphon. You can also use the existing rotary syphon and horizontal pipe.

The critical dimensional differences between the LN and ELSN rotary joint are shown below.

Joint Size	A	B	C
2"	2.13" (54 mm)	1.13" (29 mm)	2.19" (56 mm)
2½"	3.56" (90 mm)	1.38" (35 mm)	2.88" (73 mm)
3"	2.47" (63 mm)	0.78" (20 mm)	1.56" (40 mm)