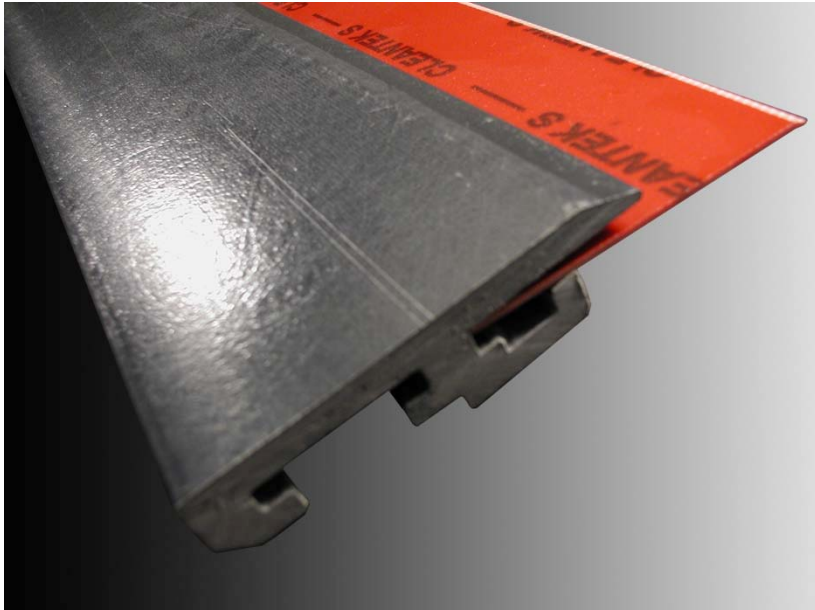


PATENTED

UniSlide™ Blade Holder

UniSlide



UniSlide Blade Holder
•Composite pultrusion



UniSlide T-Rail
•Stainless steel
•Aluminum

UniSlide

- Can be used in wet or dry environments where temperatures are less than 250 F degrees.
- Lightweight - easy to install
- Corrosion resistant
- Affordable - allows for inexpensive storing of spare holders

UniSlide



T-Rail

Drilled and tapped
retaining screw hole
(Tending Side)

Planned mounting
surface on doctor
back

UniSlide



UniSlide holder sliding onto t-rail

Retaining screw hole

UniSlide



UniSlide
holder

T-rail

Retaining
Screw

UniSlide Holder



Dryer Doctors with UniSlide Blade Holders